

ProSeries^{AC}

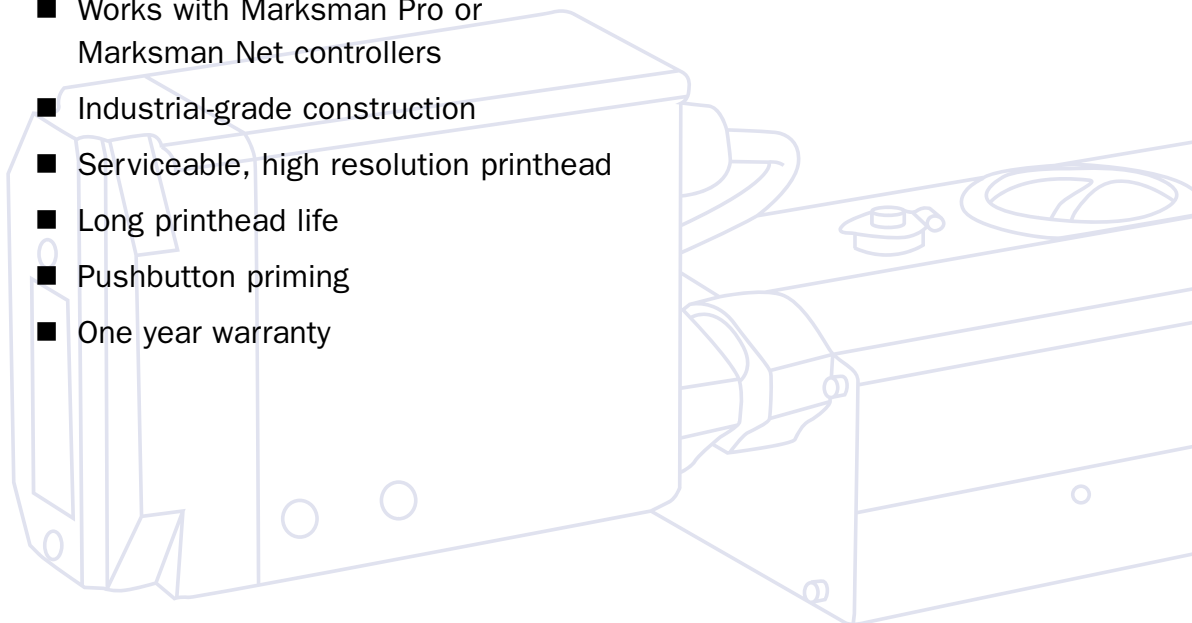
Inkjet Printing for the Real World

This alphanumeric ink jet printhead delivers the high resolution printing you need and the economy you want.



ProSeries AC Features & Benefits:

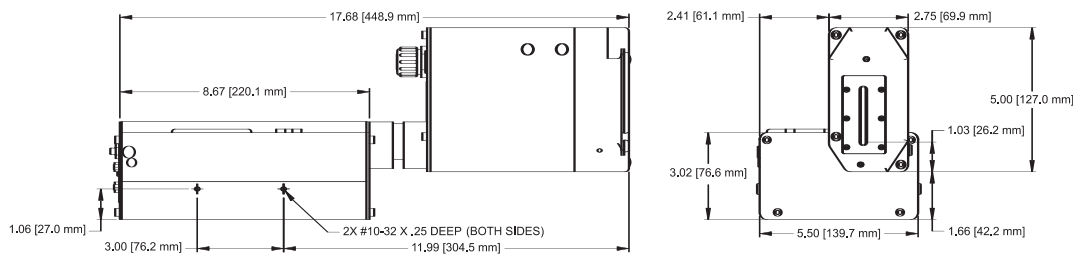
- Prints up to 5 lines
- 1" to 1.9" print height
- Up to 1/2" ink throw
- Ink dries in less than 1/4 second
- Works with Marksman Pro or Marksman Net controllers
- Industrial-grade construction
- Serviceable, high resolution printhead
- Long printhead life
- Pushbutton priming
- One year warranty



Specifications

ProSeries^{AC}

Dimensions



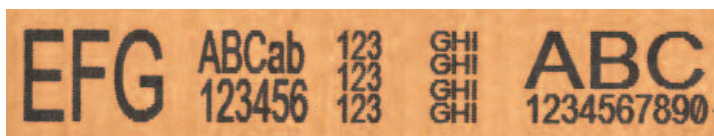
Printheads

Print Height	Image area from 1" -1.9" (24 mm - 48mm)
Print Orientation	Integrated – horizontal or horizontal angle Modular – print down applications
Mounting Angle	34° - 90° from horizontal
Orifices/Channels	224/32
Lines of Print	Up to 5 lines
Horizontal Resolution	150 or 300 dpi (with Marksman Pro)
Throw Distance	Up to 1/2"
Operating Conditions	Temperature: 50° - 104° F (10° - 40° C) Relative humidity: 20% - 80% (non-condensing)
Storage Conditions	Temperature: 32° - 109° F (0° - 43° C) Relative Humidity: 20% - 80% (non-condensing)
Cable Lengths	30" standard, 10' and 25' extensions available

Inks & Ink Delivery System

Priming	Pushbutton electric pump
Ink Delivery	Dual feed system
Sensors	Float switch low ink sensor
Ink Colors	ScanTrue II and AlphaMark black
Substrates	Formulated for porous surfaces
Applications	Formulated for text messages
Drying Time	Less than 1/4 second on porous surfaces
Characters/ML	199,000 characters at 3/8" height (10 mm) 173,000 characters at 1/2" height (12 mm) 37,000 characters at 1" height (25 mm) 19,500 characters at 1 7/8" height (48 mm)

Print Sample



Print sample produced by a single ProSeries AC printhead

Distributor Information



Available in economical kits that include: 1 or 2 ProSeries AC printhead(s), controller, cables, PH-conveyor bracket kits and photocell.

